

Where is the new Motor Power Company facility located?

The new facility is situated inside the Mancasale Industrial Park, Via F.lli Guerra, in Reggio Emilia. It is conveniently positioned 1.5 km from the Reggio Emilia exit of the A1 highway and 1.5 km from the AV Mediopadana Station (High Speed Train Station).

How far is the new facility from the current production site in Castelnovo Sotto?

The new headquarters is located 15 kilometers away from the current site in Castelnovo Sotto.

Will the company move entirely or will part of the current facility remain in Castelnovo Sotto?

The whole company, including production and offices, will relocate to the new facility.

F
A
Q



When is the relocation phase of the facility planned?

The relocation is scheduled for the period between December 2 and December 21, 2024.

Will the company remain operational during the relocation?

Throughout the relocation period, manufacturing operations will be temporarily halted, while the offices will continue to operate as usual. Any order completed before the shutdown will still be dispatched.

F
A
Q



Will the move result in process changes or affect the products?

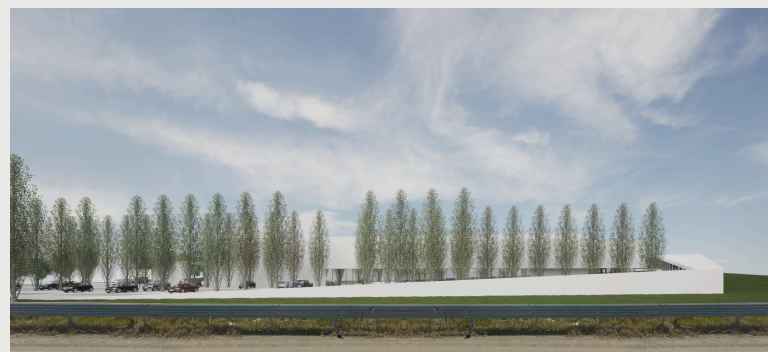
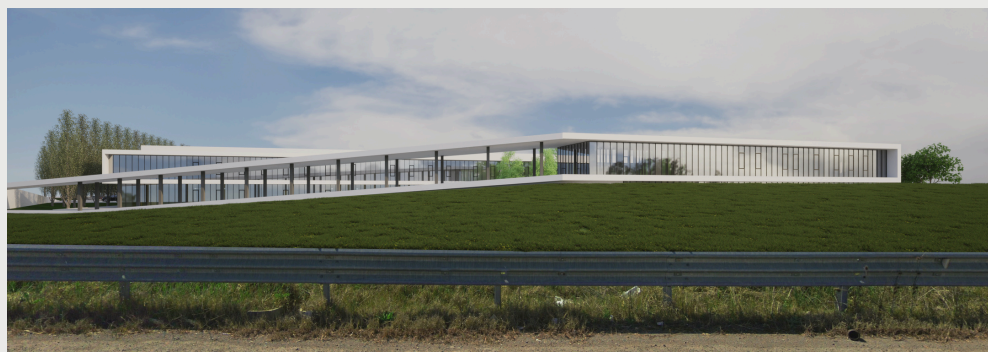
The main changes will focus on the facility's new layout and production processes, aiming for ongoing enhancement. Apart from its impressive architecture and strategic position, the new structure aims to optimize our production and logistics processes effectively. Additionally, the new upcoming facility will aim for reduced environmental impact and improved energy efficiency.

How can we confirm the validity of the audit conducted at the current facility in Castelnovo Sotto?

Feel free to reach out to us, and we will gladly arrange new audit sessions to verify the production process at the new facility.

F
A
Q





F
A
Q